



NEPAL EARTHQUAKE
HOUSING RECONSTRUCTION
MULTI-DONOR TRUST FUND

WHERE DO WE STAND TODAY?

Progress Update as of March 29th, 2017

HIGHLIGHTS

- The Private Housing Reconstruction continues at steady pace in the 14 most affected districts.
- **The Government of Nepal has announced** that the distribution of first tranche in the 17 less affected districts will start in mid-April.
- **More than 50 agreements have been signed** with banking and financial institutions to facilitate the payment of housing grants through individual bank accounts for beneficiaries.

LATEST DATA ON EHRP'S KEY INDICATORS

as of March 29, 2017:



823,457 Households surveyed



626,696 Eligible beneficiaries identified



560,579 Beneficiaries enrolled (approximately 90% of eligible beneficiaries)



540,856 Beneficiaries have received 1st tranche of housing cash grant
3,704 Beneficiaries have received 2nd tranche of housing cash grant
420 Beneficiaries have received 3rd tranche of housing cash grant



204,177 Grievance cases registered



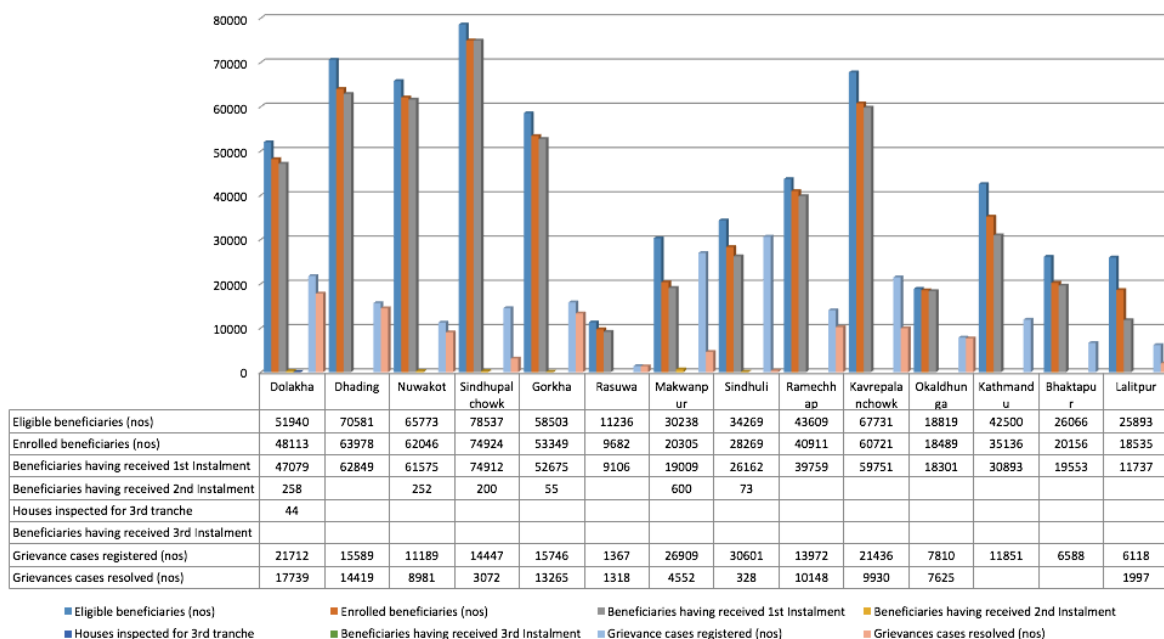
1301 Engineers deployed (14 districts)
469 Sub-Engineers deployed (14 districts)
508 Asst. Engineers deployed (14 districts)



4,236 Masons trained
561 Engineers trained

Source: Government of Nepal. National Reconstruction Authority

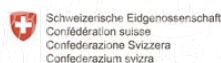
ENROLLMENT PROCESS SUMMARY (AS OF MARCH 29, 2017)



PRIVATE HOUSING RECONSTRUCTION PROGRESS SUMMARY (AS OF MARCH 29, 2017)

Private Housing Reconstruction Progress Summary, Updated Date: 29 Mar 2017								
S.N.	District	Total Identified Beneficiaries	Grant Agreement		First Tranche Deposited to Bank A/c		Second Tranche Deposited to Bank A/c	Third Tranche Deposited to Bank A/c
			Total Household	%	Total Household	%		
1	SINDHUPALCHOK	78537	74924	95	74912	95	200	0
2	OKHALDHUNGA	19819	18601	94	18449	93	57	0
3	NUWAKOT	65773	62128	94	61653	94	643	26
4	RAMECHHAP	43609	40911	94	39759	91	0	0
5	DOLAKHA	51940	48128	93	47079	91	387	105
6	GORKHA	58503	54114	92	54114	92	150	0
7	DHADING	70581	64293	91	62849	89	0	0
8	KABHREPALANCHOK	67731	62736	93	61906	91	1459	0
9	RASUWA	11236	9682	86	9106	81	0	0
10	SINDHULI	34269	28269	82	26162	76	157	0
11	MAKAWANPUR	30238	21757	72	20691	68	651	289
12	KATHMANDU	42500	35136	83	31741	75	0	0
13	LALITPUR	25893	19675	76	12395	48	0	0
14	BHAKTAPUR	26066	20225	78	20040	77	0	0
	Total	626695	560579	89	540856	86	3704	420

Source: Government of Nepal. National Reconstruction Authority



Federal Department of Foreign Affairs FDFA
Swiss Agency for Development and Cooperation SDC

